



## PRODUCT DATASHEET

[www.high-accuracy.com](http://www.high-accuracy.com)

# Emerson™ Plantweb™ Insight



- Analytic and application package providing strategic interpretation and monitoring of plant assets
- Relevant-time actionable information and insights about abnormal situations, asset state, asset health, energy costs, emissions loss, etc.
- Seamless system integration, simple installation, and minimal configuration or set-up
- Pre-packaged analytics based on decades of process and industry experience
- Human centered design and user tested interface for consistent and intuitive navigation

Gain real-time insights into abnormal situations

- Suite of asset monitoring applications identifying abnormal situations and failures using process analytics
- Learn about issues before they impact the bottom line with alerting and failure identification
- The intuitive and easy-to-read views highlight high priority, actionable information



Lightweight, secure, and reliable software package allows seamless integration into current infrastructure

- Easily deployed via a virtual machine
- Access the interface anytime from a multitude of web browsers
- Human centered design considerations allow for quick and intuitive start up and configuration
- Integrate with existing wireless ecosystem to expand capabilities and leverage current investment



Monitor one asset or thousands with a fully scalable software package and numerous applications

- Applications are based on key assets such as steam traps, pumps, heat exchangers, safety showers, and many more
- Start small or monitor all your assets in one spot
- Integration with other business systems such as OSI Pi and data historians
- Deploy in small, large, or enterprise-wide operations

Contents

Ordering information ..... 9      Specifications .....10

User interface

Every application in the Plantweb Insight suite has a similar look and feel for a consistent user experience. The main views can be broken into three layers.

Dashboard

The dashboard page is an umbrella overview of the asset class being monitored. This page will provide an aggregated view of the entire asset class and the most important insights. These insights will vary from application to application with examples including asset status, asset health, energy costs, emissions loss, critical alerts, etc. A brief trending of these key insights is also provided for historical tracking and trending.



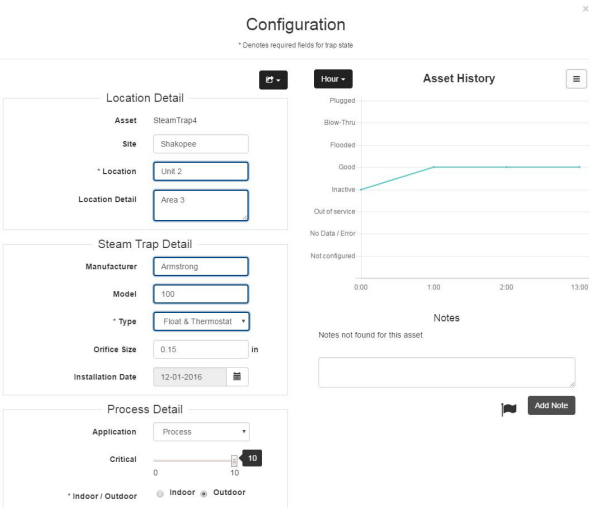
Asset summary

The asset summary page is a tabular view of all assets being monitored. This view provides a similar perspective as the dashboard but on an asset-by-asset basis. This page is fully sortable, searchable, and filterable for quick prioritization and identification. The asset summary page can also be exported via CSV or Excel® for reporting.

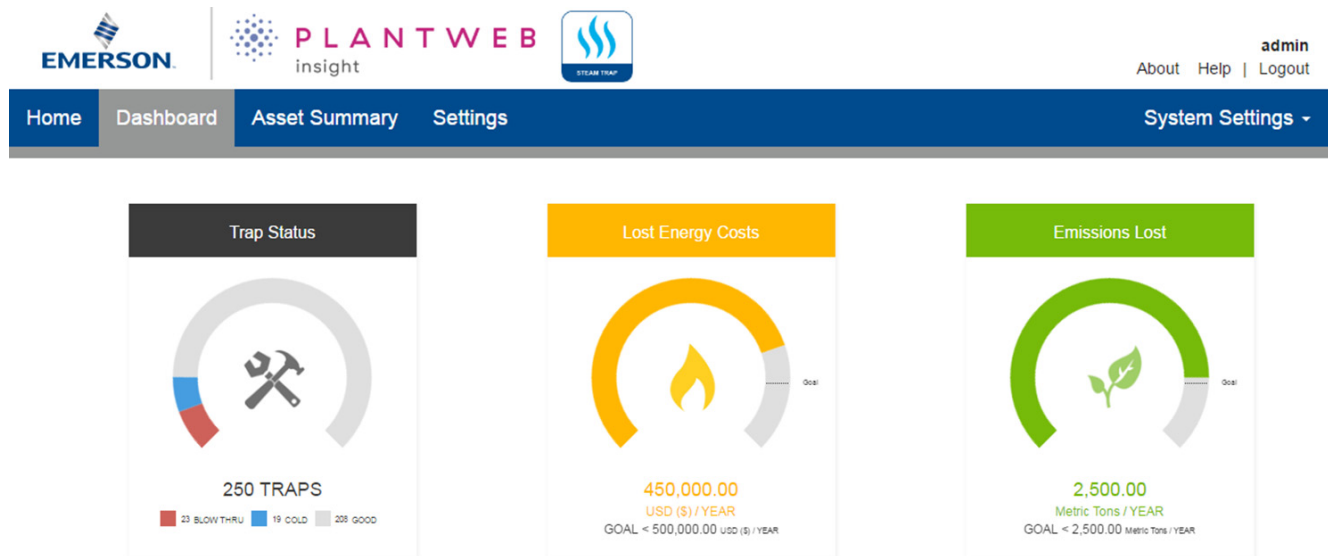
Asset #	Site	Location	Asset Status	Energy Loss ( USD (\$) / Year )	Carbon Emissions ( Metric Tons / Year )	Duration
ST101	Site 1	Unit 1	Good	---	---	10 days
ST102	Site 1	Unit 1	Good	---	---	15 days
ST103	Site 1	Unit 1	Blow Through	20996	60.32	1 day
ST112	Site 2	Unit 1	Blow Through	12945	42.29	20 days
ST113	Site 2	Unit 1	Good	---	---	13 days
ST114	Site 2	Unit 1	Good	---	---	6 hours
ST104	Site 1	Unit 2	Good	---	---	10 hours
ST105	Site 1	Unit 2	Good	---	---	25 days
ST106	Site 1	Unit 2	Flooded	---	---	2 days
ST115	Site 2	Unit 2	Good	---	---	1 day
ST116	Site 2	Unit 2	Blow Through	15552	48.17	5 hours
ST117	Site 2	Unit 2	Plugged	---	---	20 days
ST107	Site 1	Unit 3	Flooded	---	---	3 hours
ST108	Site 1	Unit 3	Plugged	---	---	3 days
ST109	Site 1	Unit 3	Inactive	---	---	1 day
ST110	Site 1	Unit 3	Good	---	---	5 days
ST118	Site 2	Unit 3	Good	---	---	12 days
ST119	Site 2	Unit 3	Good	---	---	4 days
ST120	Site 2	Unit 3	Good	---	---	12 hours

Asset details

The asset details page provides specific asset details. These details include location, process, application, asset, and device details for each individual asset. It also provides calculated insights such as relevant-time status, health, energy, emissions, etc. information and a brief asset history. A notes section allows users to add notes and flag assets for follow-up.



## Steam trap insight



### Features

- In-depth monitoring of steam traps
- Provides relevant time steam trap status including failure modes (blow through, plugged, flooded)
- Steam trap status algorithm based on thousands of real-customer data points and analytics
- Economic and environmental impact displayed in terms of excess energy costs and emissions loss
- Prioritize maintenance based on most problematic or highest impact failed traps

### Calculated insights

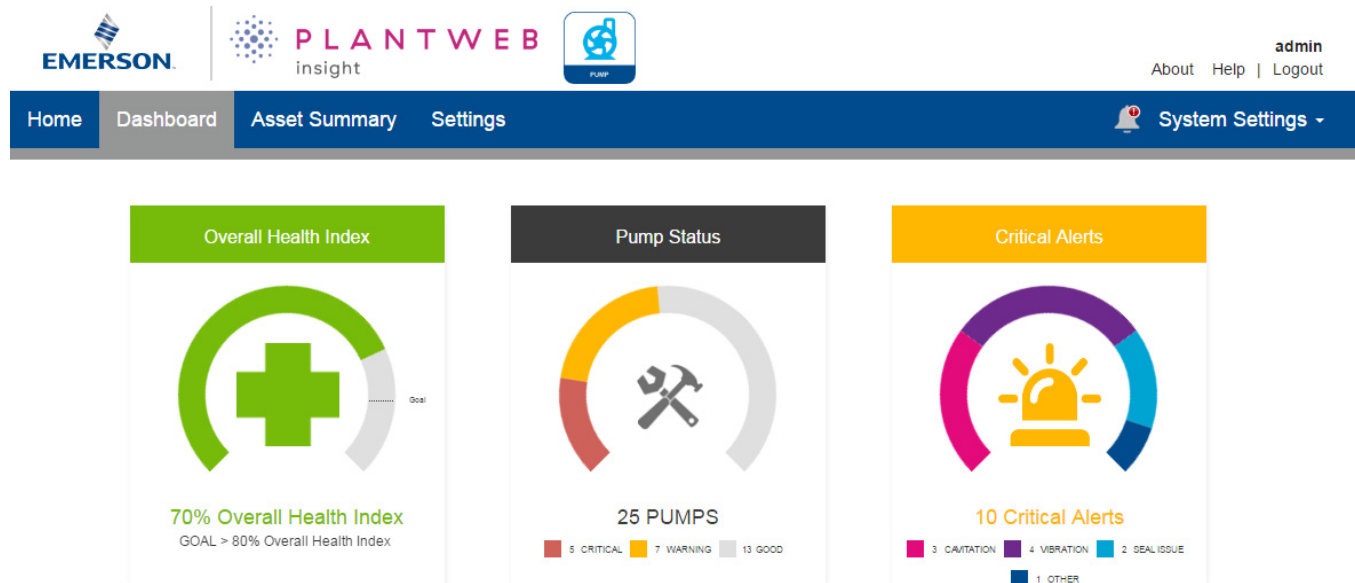
- Steam trap status
  - Good
  - Blow through
  - Plugged
  - Flooded
  - Inactive
- Energy costs
- Emissions loss

### Related products

- Emerson 1410/1420 Wireless Gateway
- Rosemount™ 708 Wireless Acoustic Transmitter



## Pump insight



### Features

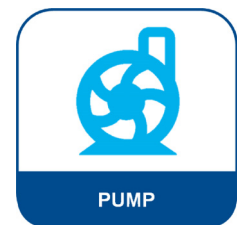
- In-depth monitoring of fixed-speed pumps
- Provides relevant time pump status and alerts (high vibration, cavitation, pump head, etc.)
- Pre-built algorithms based on decades of process experience and industry vetted analytics
- Predictive diagnostics and alert weights allows prioritization of pump maintenance

### Calculated insights

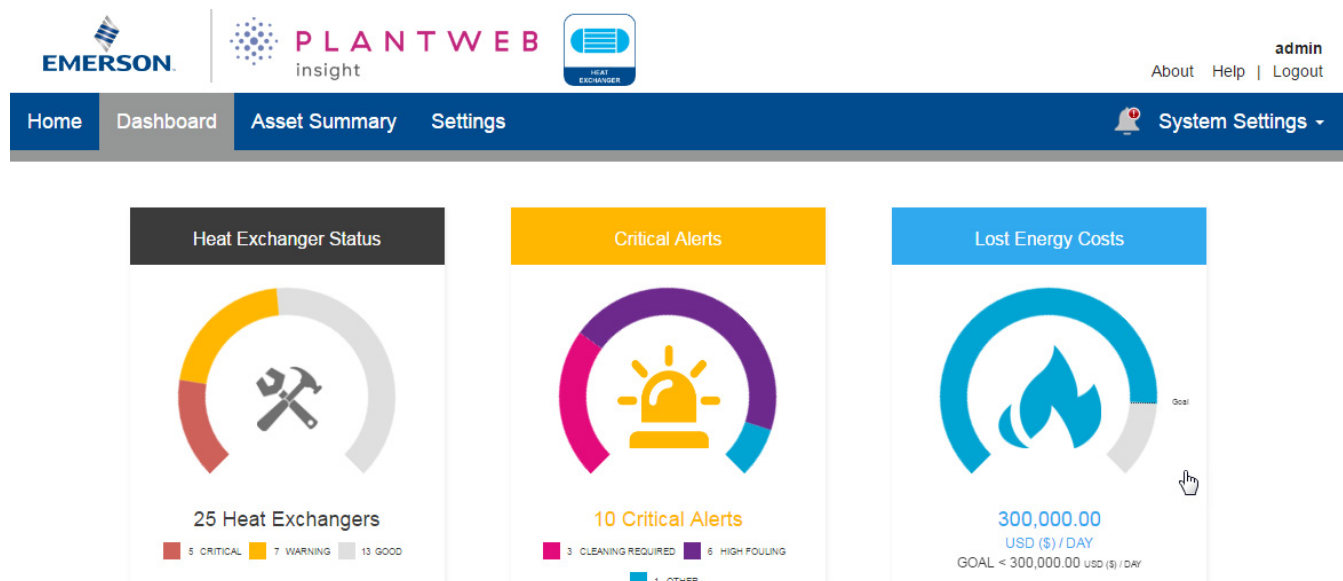
- Vibration monitoring
- Cavitation
- Pump pressure differential
- Process variable thresholds based on baseline capture
- Pump health index
- Abnormal situation awareness in the form of alerts

### Related products

- Emerson 1410/1420 Wireless Gateway
- AMS 9420 Wireless Vibration Transmitters
- Rosemount 3051S Wireless Pressure Transmitters
- Rosemount 3308 Wireless Level Transmitters



## Heat exchanger insight

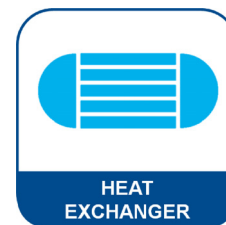


### Feature

- In-depth monitoring of shell and tube heat exchangers
- Provides relevant time heat exchanger status and alerts (fouling, heat duty, etc.)
- Pre-built algorithms based on decades of process experience and industry vetted analytics
- Predictive diagnostics and alert weights allows prioritization of heat exchanger maintenance

### Calculated insights

- Heat duty
- Fouling
- Process variable thresholds based on baseline capture
- Heat exchanger index
- Abnormal situation awareness in the form of alerts



### Related products

- Emerson 1410/1420 Wireless Gateway
- Rosemount Wireless Temperature Transmitters
- Rosemount Temperature Sensors
- Rosemount 3051SFC DP
- Rosemount 3051S DP Wireless Differential Pressure Transmitter

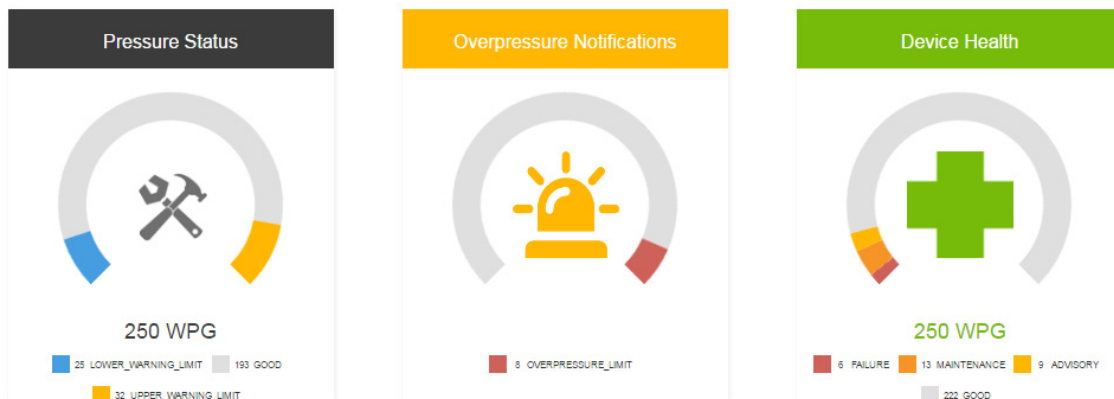
## Wireless pressure gauge insight



adm  
About | Help | Logo

Home | Dashboard | Device Summary

 System Settings



### Features

- “Know before you go” insights into the Rosemount Wireless Pressure Gauge
- Provides relevant time pressure status of all wireless pressure gauges
- Manually configure thresholds for alerts
- Manage maintenance with device health indicators

### Calculated insights

- Pressure status
  - High pressure warning
  - Low pressure warning
- Overpressure notifications
- Device health

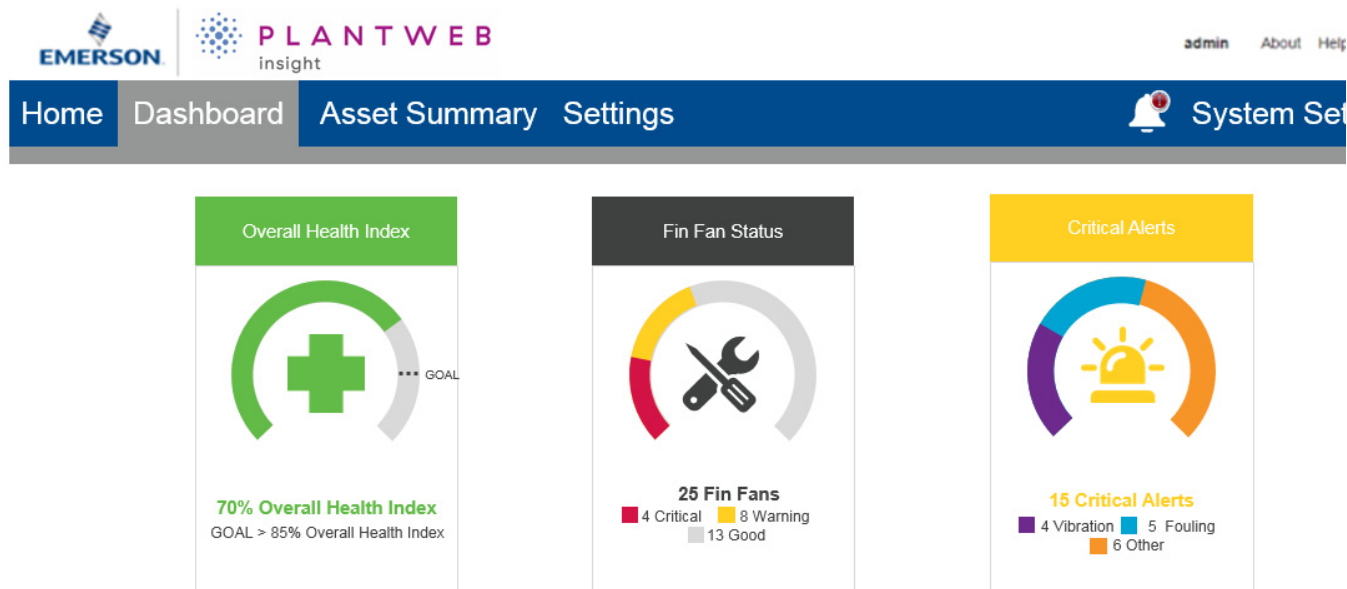
### Related products

- Emerson 1410/1420 Wireless Gateway





## Air cooled heat exchanger insight



### Features

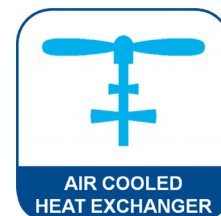
- In-depth monitoring of air cooled heat exchangers
- Provides real-time air cooled heat exchanger status, health and alerts (fouling, vibration, etc.)
- Pre-built algorithms based on decades of process experience and industry vetted analytics
- Predictive diagnostics and alert weights allows prioritization of maintenance

### Calculated insights

- Vibration monitoring
- Fouling
- Louver/pitch defect
- Process variable thresholds based on baseline capture
- Air cooled heat exchanger health index
- Abnormal situation awareness in the form of alerts

### Related products

- Emerson 1410/1420 Wireless Gateway
- Rosemount Wireless Temperature Transmitters
- Rosemount Temperature Sensors
- AMS 9420 Wireless Vibration Transmitters
- Fisher™ 4320 Wireless Position Monitor



## Communication specifications

### Modbus® TCP/IP

- Plantweb Insight contains a Modbus TCP interface. Functions, registers and tags are clearly defined within Plantweb Insight.

### OPC UA client

- Plantweb Insight contains an OPC UA client for accessing information from OPC UA servers.

### HART-IP™ client

- Plantweb Insight acts as a HART-IP client for polling information from HART-IP sources such as Emerson 1410/1420 Gateways.

## Ordering information

**Table 1. Emerson Plantweb Insight Ordering Information**

The starred offerings (★) represent the most common options and should be selected for best delivery. The non-starred offerings are subject to additional delivery lead time.

Model	Product description	
7001X	Plantweb Insight	★
<b>Installation type</b>		
V <sup>(1)</sup>	Virtual machine	★
<b>Number of networks<sup>(2)</sup></b>		
002	20 Gateways	★
010	100 Gateways	★
<b>Applications</b>		
ST	Steam trap	★
PU	Pump	★
HE	Heat exchanger	★
WP	Wireless pressure gauge	★
AC	Air cooled heat exchanger	★
<b>Subscription support</b>		
WR3	3-year service and support, including application updates	★
WR5	5-year service and support, including application updates	★
<b>Typical model number: 7001X V 002 ST PU WR3</b>		

1. Number of Networks must be selected.

2. Only applicable to virtual machine installation type.

# Specifications

## System requirements

### Host operating system

#### Virtualization software

- VMware Workstation Pro™/Player™ 10 or higher  
(requirements can be found [here](#))
- OR
- VMware vSphere® 5.5 or higher (requirements can be found [here](#))

### Guest operating system

- Processors = 2
- Memory = 1GB RAM minimum
- Hard drive = 20GB of free space

### Application

#### Browsers (recent versions supported)

- Chrome™ browser
- Mozilla Firefox®
- Safari®
- Microsoft® Windows™ Edge
- Microsoft Internet Explorer™

### Other requirements

A DVD drive is required for installations.

## Communication protocols


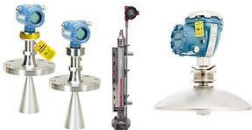










- Modbus TCP/IP
- HART-IP
- OPC UA client



# HA HIGH ACCURACY

m e a s u r e m e n t   i n s t r u m e n t s

Our offering:

	Pressure Measurement		Level Measurement
	Temperature Measurement		Flow Measurement
	Marine Measurement & Analytical		Gas Analysis
	Liquid Analysis		Flame and Gas Detection
	Tank Gauging		Wireless Infrastructure
	Acoustic & Discrete		

[www.high-accuracy.com](http://www.high-accuracy.com)

## Global Headquarters

### Emerson Automation Solutions

6021 Innovation Blvd.  
Shakopee, MN 55379, USA  
+1 800 999 9307 or +1 952 906 8888  
+1 952 949 7001  
RFQ.RMD-RCC@Emerson.com

## North America Regional Office

### Emerson Automation Solutions

8200 Market Blvd.  
Chanhassen, MN 55317, USA  
+1 800 999 9307 or +1 952 906 8888  
+1 952 949 7001  
RMT-NA.RCCRFQ@Emerson.com

## Latin America Regional Office

### Emerson Automation Solutions

1300 Concord Terrace, Suite 400  
Sunrise, FL 33323, USA  
+1 954 846 5030  
+1 954 846 5121  
RFQ.RMD-RCC@Emerson.com

## Europe Regional Office

### Emerson Automation Solutions Europe GmbH

Neuhofstrasse 19a P.O. Box 1046  
CH 6340 Baar  
Switzerland  
+41 (0) 41 768 6111  
+41 (0) 41 768 6300  
RFQ.RMD-RCC@Emerson.com

## Asia Pacific Regional Office

### Emerson Automation Solutions

1 Pandan Crescent  
Singapore 128461  
+65 6777 8211  
+65 6777 0947  
Enquiries@AP.Emerson.com

## Middle East and Africa Regional Office

### Emerson Automation Solutions

Emerson FZE P.O. Box 17033  
Jebel Ali Free Zone - South 2  
Dubai, United Arab Emirates  
+971 4 8118100  
+971 4 8865465  
RFQ.RMTMEA@Emerson.com



Linkedin.com/company/Emerson-Automation-Solutions



Twitter.com/Rosemount\_News



Facebook.com/Rosemount



Youtube.com/user/RosemountMeasurement



Google.com/+RosemountMeasurement

Standard Terms and Conditions of Sale can be found on the [Terms and Conditions of Sale page](#).

The Emerson logo is a trademark and service mark of Emerson Electric Co. Emerson.

Rosemount and the Rosemount logotype are trademarks of Emerson.

Chrome is a trademark of Google Inc.

Excel, Microsoft, and Internet Explorer are registered trademarks of

Microsoft Corporation in the United States and other countries.

Mozilla Firefox is a registered trademark of The Mozilla Foundation.

Workstation Player and Workstation Pro are trademarks of VMware.

vSphere is a registered trademark of VMware.

Windows is a trademark of Microsoft Corporation in the United States and other countries.

Safari is a registered trademark of Apple Inc., registered in the U.S. and other countries.

HART-IP is a trademark of the FieldComm Group.

Modbus is a registered trademark of Gould Inc.

Fisher is a trademark of Emerson.

All other marks are the property of their respective owners.

© 2017 Emerson. All rights reserved.